

22 gauge stainless steel return

Return of back to slide into face can.

L.E.D. Strip

1/8" acrylic insert (color varies)

4-40 flat pan head screw to hold I-clip to letter.

4-40 nut welded to inside of back

10-32 mounting stud (length varies)

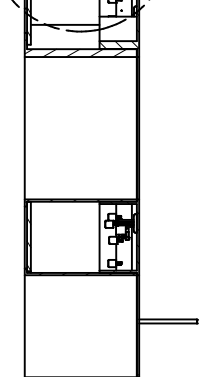
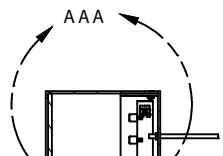
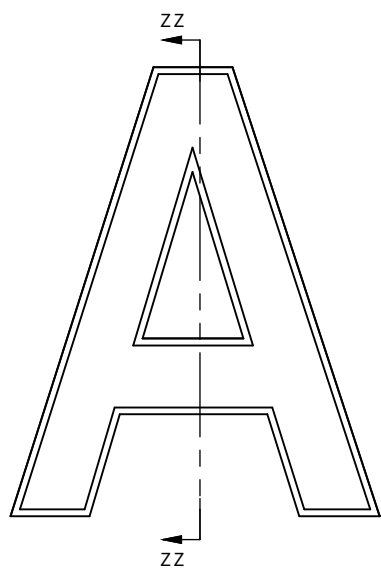
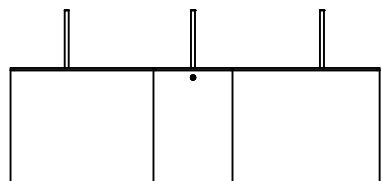
10-32 nut welded to inside of back

18 gauge stainless steel cookie can back

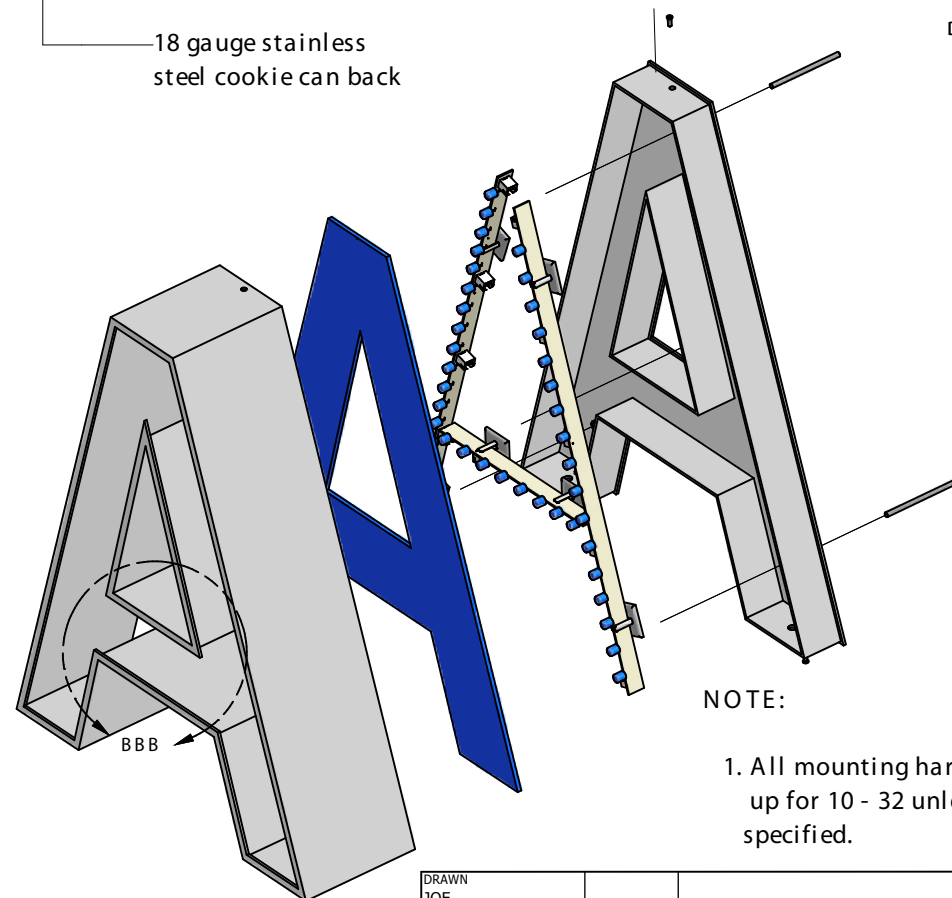
open face with a 18 gauge stainless steel trim.

DETAIL AAA SCALE 1.50 : 1

DETAIL BBB SCALE 1 : 1



SECTION ZZ-ZZ SCALE 0.40 : 1



NOTE:

1. All mounting hardware is set up for 10 - 32 unless otherwise specified.

DRAWN JOE		TITLE Face Lit L.E.D. Trim Plus Letter with Cookie Can Backs set up for stud mount.
CHECKED		
QA		
MFG		
APPROVED		SIZE SCALE
		Drawing Number: M 15
		REV
		SHEET 16 OF 18



SIGN SUPPLIER OF THE YEAR 2008